



SCENARIO NR 2
THE TRAGEDY OF HAMLET



© Nausika Foundation 2021

www.nausika.eu/larpchess

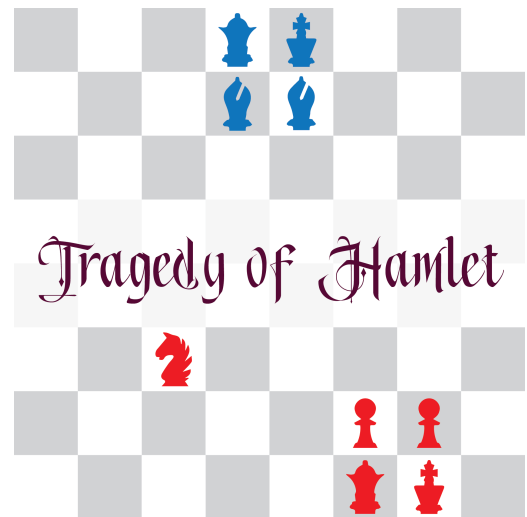
biuro@nausika.eu

+48 518 584 244

SCENARIO NR 2 | THE TRAGEDY OF HAMLET

A bloody brawl at the Danish royal court, which left the castle floor covered with bodies and the crown left to be taken by a foreign prince. "The rest is silence" - as William Shakespeare concluded this work of his. However, the story may find a different conclusion if only the players decide to make different choices.

- the King of Denmark (Hamlet's father) has died recently, leaving the throne to his brother Claudius (Hamlet's uncle)
- Gertrude (Hamlet's mother) quickly re-married to Claudius without any sign of mourning, thus keeping her position as the queen of Denmark
- a ghost of the previous king appears at night to Hamlet and his trusted friend Horatio and accuses Claudius of craftily murdering him in sleep
- Hamlet is suffering an existential breakdown, which ruins his romantic relationship with young beauty called Ophelia
- poor Ophelia is left alone, as Polonius, her father, sees nothing beyond little courtly games and Laertes, her brother, dreams only of studying abroad, far away from this petty backstabbing company.



The whole story takes place in the Elsinore Castle (Danish capital by the time), which is represented by 64 tiles of the chessboard. The time of the story is around 1 week, which should fit into 1 hour of gameplay.

The Tragedy of Hamlet - 9 players					
n.	BLUE	VALUE	18	OBJECTIVE	whom
1	Hamlet	king	3	win	(group)
2	Horatio	queen	9	message	Ophelia
3	Rosenkranz	bishop	3	kill	Laertes
4	Guildenstern	bishop	3	message	Ophelia
5					
6					
7					
8					
n.	RED	VALUE	17	OBJECTIVE	whom
1	Claudius	king	3	win	(group)
2	Gertrude	queen	9	kill	Horatio
3	Laertes	horse	3	kill	Rosenkranz
4	Polonius	pawn	1	promote	yourself
5	Ophelia	pawn	1	survive	Laertes
6					
7					
8					



name

Hamlet

description

You are the young prince of Denmark, son of old king Hamlet, who unfortunately left this world a few weeks ago. The crown was taken by Claudius - his brother and your uncle. You have had your travels (including studying in Wittenberg), but now you are back in Elsinore, only to see that something is not right around here. It's high time to fix your complicated family issues.

Recently, you have seen a ghost of your father, who claimed that Claudius had deceitfully poisoned him in his sleep. You don't know if the ghost can be trusted, but this trait needs to be investigated. As a matter of precaution, you started pretending that you had gone mad. This was a bold move - other people may underestimate you, make mistakes and talk too loudly when you're around. Use this trick to get the best out of the situation.

Unfortunately, your madness had a negative effect on your relationship with Ophelia. You have threatened her sharply and unfairly in the sake of keeping up the disguise. You truly love her (and you believe it's mutual). You have asked your friend Horatio to deliver a letter of explanation to her. Let's hope it's delivered before she does something stupid.

personal objective

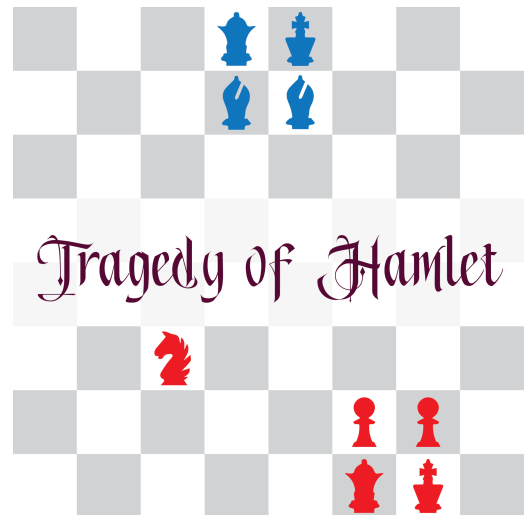
Your disguise as a mad person has worked well, everyone has believed you. It's time to act now! Empower the position of your friends at the royal court, undermine the position of those who oppose you. Talk and negotiate, black-mail and fight them. Don't hesitate before anything to reach your real goal - the Crown of Denmark.

There is no personal objective for a future king and responsible leader. Only the team victory matters, you get 2 points for it (see below).

group objective

You get 2 points if your team wins the game of chess.

Try to focus on strategic thinking and be careful about your friends' advice - they may be pursuing their own private agenda.



lore

To be, or not to be: that is the question:
 Whether 'tis nobler in the mind to suffer
 The slings and arrows of outrageous fortune,
 Or to take arms against a sea of troubles,
 And by opposing end them? To die: to sleep;
 No more; and by a sleep to say we end
 The heart-ache and the thousand natural shocks
 That flesh is heir to, 'tis a consummation
 Devoutly to be wish'd. To die, to sleep;
 To sleep: perchance to dream: ay, there's the rub;
Act 3, Scene 1



BLUE | KING

HAMLET





name

Horatio

description

You are a trusted friend of Prince Hamlet. His only trusted friend, perhaps. The two of you have studied together in Wittenberg, indulging in parties that none of your parents' would like to hear of. But here you are, back again with your friend's castle, Elsinore, where he is an heir to the throne, not a bachelor anymore.

You distrust his other companions - Rosenkranz and Guildenstern. You've seen them in Wittenberg, two low-born sneaky bastards, crawling for any kind of compliment from the superiors. Keep an eye on them!

Few days ago, while having a late-night drink at the outer walls of the castle with Hamlet, the two of you had seen a ghost. The ghost was mourning it's own death and pleading to be revenged. Hamlet took this vision seriously, but you are rather a lay and rational man.



personal objective

You are deeply worried about your friend's behaviour. Has he really gone mad? Hopefully, it's just a love affair. He should get better once his romantic conquest is fulfilled. Hamlet has asked you to deliver a love letter to Ophelia. He cannot do this himself, because he suspects spies all around. You must help your friend and move this plot ahead.

You get 1 point if you deliver the Message Card personally to Ophelia and survive the next move. You need to stand directly field-to-field (horizontally, vertically or diagonally) in order to deliver a Message. Try to do this in secret, otherwise other players will figure out your objective.

group objective

Your only objective is to win this war. You get 2 points if your army wins the game of chess. Try to focus on strategic thinking, but also on personal relations with your allies - convince them to reasonable moves and necessary sacrifices. Listen to their advice, but carefully, as they may be pursuing their own private agenda.

lore

Horatio: If your mind dislike any thing, obey it. I will forestall their repair hither, and say you are not fit.

Hamlet: Not a whit, we defy augury. There is special providence in the fall of a sparrow. If it be now, 'tis not to come; if it be not to come, it will be now; if it be not now, yet it will come—the readiness is all. Since no man, of aught he leaves, knows what is't to leave betimes, let be.

Act 5, Scene 2

BLUE | QUEEN

HORATIO





name

Rosenkranz

description

You are a classmate of Hamlet from the times when you studied together in Wittenberg. You have never got close at the personal level, but you have seen each other at countless student parties, never getting into each other's way.

Recently, you have been called to Castle Elsinore by Claudius - the new king of Denmark, along with Guildenstern, your best friend. The king asked you to investigate the reasons behind Hamlet's (his nephew) melancholy. Is it just an unfortunate love affair with Ophelia (daughter of Polonius, a respected member of the Court)? Is it an existential crisis, a side effect of philosophical questions combined with heavy drinking? Or is it something deeper, an affair that could possibly undermine the king's position and shake the political life of Denmark?

While in Elsinore, you started to sympathize with Hamlet, an eccentric but intelligent man. After all, you are university students, that's a strong bondage. Compared to Hamlet, King Claudius behaves like a provincial boor who doesn't deserve the throne.

personal objective

You are a natural born fighter. You have never lost a duel in your life. Now, a legend says that no one in Denmark has ever won a duel with Laertes, the young and splendid son of Polonius. Laertes is presently in Elsinore, but a rumor says that he is about to leave Denmark in sake of discovering a bigger world. Catch your chances now! Challenge him. Or fight him in any way available.

You get 1 point if you eliminate Laertes by your own move.

Keep this objective a secret, otherwise your teammates will figure out that you are following a strategy which is not the most profitable for the team.

group objective

You get 1 point if your team wins the game of chess.

NOTE: If you have drawn the "Traitor Card", your group objective is reversed - you get 1 point if the opposite team wins the game of chess.

lore

Hamlet:

Why did you laugh then, when I said 'Man delights not me'?

Rosencrantz:

To think, my lord, if you delight not in man, what lenten entertainment the players shall receive from you. We coted them on the way, and hither are they coming to offer you service.

Act 2 Scene 2



"Life is a gamble, at terrible odds. If it were a bet you wouldn't take it."

Tom Stoppard, Rosencrantz and Guildenstern Are Dead

ROSENKRANZ





name

Guildenstern

description

You are a classmate of Hamlet from the times when you studied together in Wittenberg. You have never got close at the personal level, but you have seen each other at countless student parties, never getting into each other's way.

Recently, you have been called to Castle Elsinore by Claudius - the new king of Denmark, along with Rosenkranz, your best friend. The king asked you to investigate the reasons behind Hamlet's (his nephew) melancholy. Is it just an unfortunate love affair with Ophelia (daughter of Polonius, a respected member of the Court)? Is it an existential crisis, a side effect of philosophical questions combined with heavy drinking? Or is it something deeper, an affair that could possibly undermine the king's position and shake the political life of Denmark?

While in Elsinore, you started to sympathize with Hamlet, an eccentric but intelligent man. After all, you are university students, that's a strong bondage. Compared to Hamlet, King Claudius behaves like a provincial boor who doesn't deserve the throne.

personal objective

When approaching Castle Elsinore, you had seen an angel enchanting the meadows around it. Later, it turned out that it's not an angel, but a real human lady, a daughter of a respected nobleman Polonius. Her name is Ophelia. She drives you crazy, completely. You would sacrifice your life for a chance to spend a single night with her.

Unfortunately, you have observed that Prince Hamlet is also in affection of her beauty. It's time to act fast! You must express your feelings towards her. It is a royal court, however, so you cannot do this openly. Instead, you should write a love-letter and secretly deliver it to her.

You get 1 point if you deliver the Message Card personally to Ophelia and survive the next move. You need to stand directly field-to-field (horizontally, vertically or diagonally) in order to deliver a Message. Try to do this in secret, otherwise other players will figure out your objective.

group objective

You get 1 point if your team wins the game of chess.

NOTE: If you have drawn the "Traitor Card", your group objective is reversed - you get 1 point if the opposite team wins the game of chess.

lore

Hamlet: My excellent good friends! How dost thou, Guildenstern? Ah, Rosencrantz! Good lads, how do ye both?

Rosencrantz: As the indifferent children of the earth.

Guildenstern: Happy in that we are not over-happy.
On Fortune's cap we are not the very button.

Act 2 Scene 2

"Eternity is a terrible thought. I mean, where's it going to end?"

Tom Stoppard, Rosencrantz and Guildenstern Are Dead



BLUE | BISHOP

GULDENSTERN





name

Claudius

description

You are the king of Denmark. You have achieved this position recently, around a month ago. You are a natural-born leader, but the law of inheritance didn't make it easy for you. Your older brother, the previous king of Denmark, received the crown without any personal achievements, he was just born into it. He was a nice person to spend time with, but a hopeless idealist and a non-entrepreneurial ruler.

Finally, you took fate into his own hands and poisoned your brother while he was sleeping. He just didn't wake up - it was a painless death. You were instantly rewarded for this bold action - not only by the crown, but also by beautiful Gartrude, your brother's wife. Instead of mourning her dead husband, she married you, the new king, thus keeping herself at the position of the queen of Denmark! A smart woman, indeed.

personal objective

You are a new king and your authority is not established yet in Denmark. There may be people who distrust your rule, or even conspire against you. They must be dealt with - killing, bribing, poisoning, drowning, sending abroad, closing in a mad-house - every solution is good to reach the goal.

As a strong-handed leader, you set no other objective for yourself than to climb the political ladder and eliminate any signs of opposition. Only the victory of your team matters, you get 2 points for it (see below).

group objective

Your only objective is to win this war. You get 2 points if your team wins the game of chess.

Try to focus on strategic thinking, but also on personal relations with your allies - convince them to reasonable moves and necessary sacrifices. Listen to their advice, but carefully, as they may be pursuing their own private agenda.

lore

Oh, my offence is rank. It smells to Heaven.

It hath the primal eldest curse upon 't,

A brother's murder.

...

My words fly up; my thoughts remain below.

Words without thoughts never to heaven go.

Act 3 Scene 3



RED | KING

CLAUDIUS





name

Gertrude

description

You are the queen of Denmark. You had been the wife of the previous king, whom you had married as a teenager. He had been good to you, but now he's dead. Died in unexplained circumstances around a month ago. You didn't stay idle. Instead of mourning the man who is lost forever, you took fate in your own hands and decided to marry his brother - Claudius - an intelligent and promising man.

Your only suffering is that Hamlet, your beloved son, does not accept your new acquaintance. He's merely a teenager himself, but just keeps on throwing offences at you and at the rest of the Court. How can you settle his heart down? Is it necessary to turn against your own child, the blood of your blood?

personal objective

Hamlet's madness is not bad news for you. Your son needs love and attention, which he should be provided instead of royal titles and economical worries. He should be kept in a safe place, with good people to take care of him.

You suspect that his political claims to the throne of Denmark are not of his own initiative. Somebody is using him. You suspect Horatio, who claims to be his best friend. A clever bastard! You need to get rid of the one who's pulling the strings on your son's back.

You get 1 point if you eliminate Horatio by your own move.

Keep this objective a secret, otherwise your teammates will figure out that you are following a strategy which is not the most profitable for the team.

group objective

You get 1 point if your team wins the game of chess.

NOTE: If you have drawn the "Traitor Card", your group objective is reversed - you get 1 point if the opposite team wins the game of chess.

lore

Do not forever with thy vailèd lids

Seek for thy noble father in the dust.

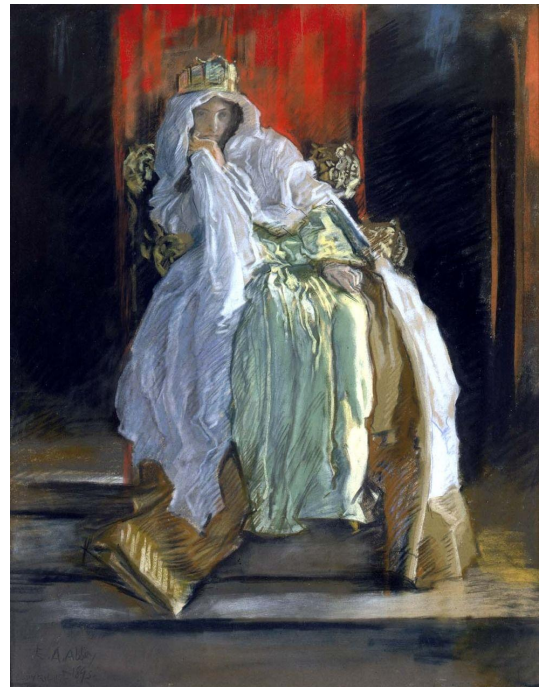
Thou knowst 'tis common: all that lives must die,

Passing through nature to eternity.

Act 1 Scene 2

The lady doth protest too much, methinks.

Act 3 Scene 2



RED | QUEEN

GERTRUDE





name

Laertes

description

You are a man of many values and a hasty character. Your aspirations reach higher than your family's position. Polonius, your father, has been a clerk at the Danish court since he was born. You listen politely to his advice, but don't really consider him an authority.

Ophelia, your younger sister (you love her deeply), is such a sweet, innocent little being. Lately, you've seen her accompanied by prince Hamlet. You hope that this absent-minded aristocrat will not just use her and leave her, as the high-born men often do. You should keep an eye on him.

personal objective

You are a natural born fighter. You have never lost a duel in your life. Now, a legend says that no one has ever won a duel with Rozenkratz, a former student of Wittenberg University, now, surprisingly, a guest of king Claudius in Elsinore. You don't know why that man has come to Denmark, but you don't care for such petty details... Catch your chances now! Challenge him. Or fight him in any way available.

You get 1 point if you eliminate Rosenkranz by your own move.

Keep this objective a secret, otherwise your teammates will figure out that you are following a strategy which is not the most profitable for the team.

group objective

You get 1 point if your team wins the game of chess.

NOTE: If you have drawn the "Traitor Card", your group objective is reversed - you get 1 point if the opposite team wins the game of chess.

lore

That drop of blood that's calm proclaims me bastard;

Cries cuckold to my father; brands the harlot...

Act 4 Scene 5

It well appears. But tell me

Why you proceeded not against these feats...

And so have I a noble father lost;

A sister driven into desp'rate terms,...

Know you the hand?

Act 4 Scene 7



RED | HORSE

LAERTES



name



Polonius

description

You are the clever mind on the Danish court. The kings may just come and go, die in a war or poison each other, but you firmly keep your position regardless of the political shifts. The previous king did not appreciate your wit, but the new King Claudius seems to be a reasonable, practical man.

You have never asked him about the details of the death of his predecessor, nor about his feelings towards Queen Gertrude. In exchange, he trusts you in the courtly matters and wouldn't like anyone else to take up your position of the royal chancellor.

You have a son, Laertes, the apple of your eye. You want him to take on your position after you retire. You hope that he won't change his mind about this while studying abroad.



personal objective

The years of your loyal service to the Crown have not been awarded properly. You deserve a reward. You are a humble person, but a little gratification would be in place. Unfortunately, nobody seems to appreciate old Polonius. Then, you must take fate in your hand and climb the social ladder on your own.

You get 1 point if you get promoted. Standard chess rules apply - you need to stand on the edge of the enemy territory to promote yourself to a stronger figure.

Keep this objective a secret, otherwise your teammates will figure out that you are following a strategy which is not the most profitable for the team.

group objective

You get 1 point if your team wins the game of chess.

NOTE: If you have drawn the "Traitor Card", your group objective is reversed - you get 1 point if the opposite team wins the game of chess.

lore

Yet here, Laertes! aboard, aboard, for shame!
The wind sits in the shoulder of your sail,
And you are stay'd for. There; my blessing with thee!
And these few precepts in thy memory
See thou character. Give thy thoughts no tongue,
Nor any unproportioned thought his act.
Be thou familiar, but by no means vulgar.
Those friends thou hast, and their adoption tried,
Grapple them to thy soul with hoops of steel;

But do not dull thy palm with entertainment
Of each new-hatch'd, unfledged comrade. Beware
Of entrance to a quarrel, but being in,
Bear't that the opposed may beware of thee.
Give every man thy ear, but few thy voice;
Take each man's censure, but reserve thy judgment.
Costly thy habit as thy purse can buy,
But not express'd in fancy; rich, not gaudy;
Act 1 Scene 3

RED | PAWN

POLONIUS



name

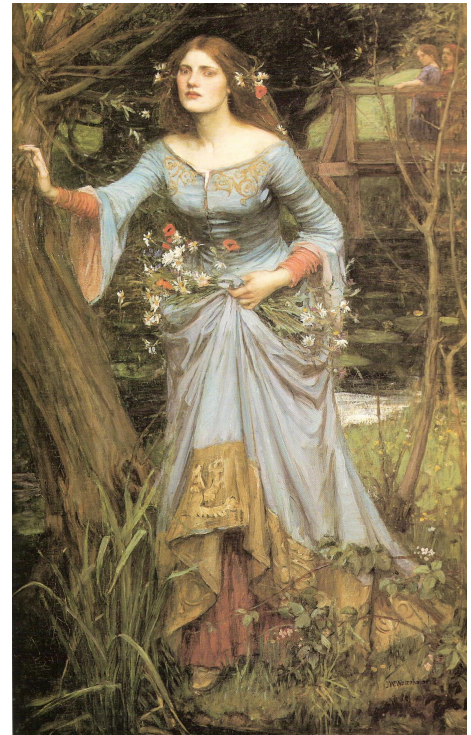


Ophelia

description

You were raised to be a well-educated lady on the Danish royal court. Your father, Polonius, is not a rich man, but thanks to his position as the royal chancellor you could join most of the activities dedicated to princes and princesses. This is how you got to know the charming prince Hamlet - a friend from childhood plays, only a few years older than you.

Strangely, he had started behaving towards you as a man behaves towards a woman. You feel uncomfortable about this. You are already 16 years old - a grown-up lady, you need to behave seriously, keep your hands and your name clean. It is important not to be seen alone in the company of men. Especially, you must listen to your father's advice and keep yourself away from prince Hamlet - he is a prince, an heir to the throne of Denmark, he would never be allowed to marry a girl from an ordinary family, even if his affections are true.



personal objective

As a well-educated lady from a poor but respectable family, you are not allowed to climb the social ladder on your own or choose a man you like. Your feelings, however, are your own business. You are filled with deep, brotherly love for your brother Laertes. You don't want to be engaged by any other man. Unfortunately, Laertes has a hasty character and easily gets into trouble. You want him to stay alive, at all costs.

You get 1 point if Laertes remains alive at the end of the game.

Keep this objective a secret, otherwise your teammates will figure out that you are following a strategy which is not the most profitable for the team.

group objective

You get 1 point if your team wins the game of chess.

NOTE: If you have drawn the "Traitor Card", your group objective is reversed - you get 1 point if the opposite team wins the game of chess.

lore

But, good my brother,
Do not, as some ungracious pastors do,
Show me the steep and thorny way to Heaven
Whiles, like a puffed and reckless libertine,
Himself the primrose path of dalliance treads
And recks not his own rede.

Act 1 Scene 3

Oh, what a noble mind is here o'erthrown!
The courtier's, soldier's, scholar's eye, tongue, sword,
Th' expectation and rose of the fair state,
The glass of fashion and the mold of form,
Th' observed of all observers, quite, quite down!

Act 3 Scene 1

RED | PAWN

OPHELIA



MESSANGES

→ print and cut

*Dear Ophelia,
You are the love of my life.
I need to confess it to You.
I'm unable to hide my feelings any longer.
Yours,
Hamlet
delivered by Horatio*

*Dear Ophelia,
You are the love of my life.
I need to confess it to You.
I'm unable to hide my feelings any longer.
Yours,
Guildenstern*